

FLOAT

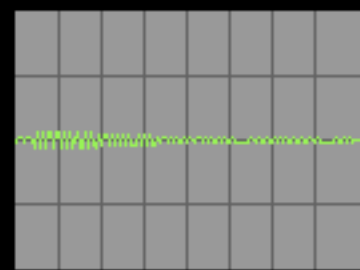
LOCATIVE SOUND INSTALLATION



POSITION
DECIMAL DEGREES

6015.052246

LAT (N)

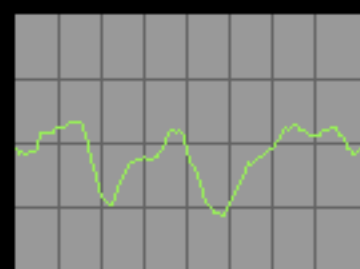


2500.136475

LONG (E)

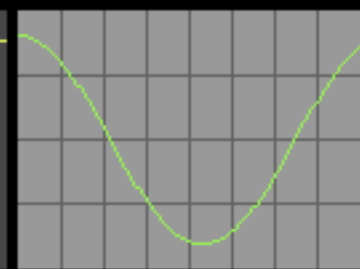
DIRECTION
DEGREES

201



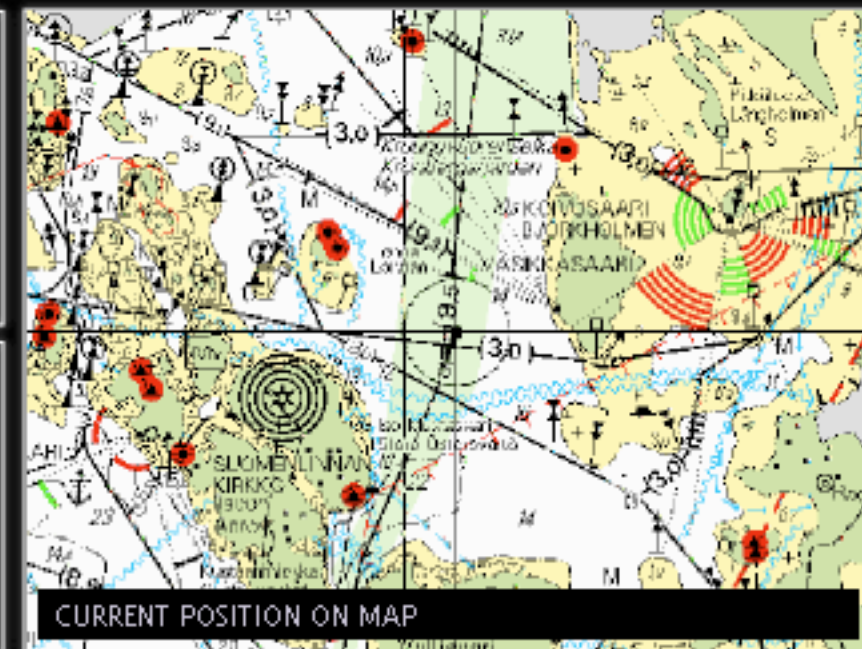
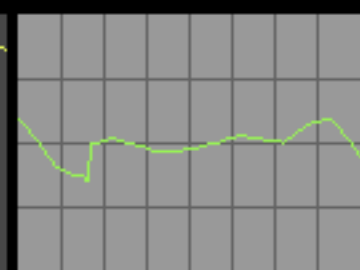
SPEED
KNOTS

11.87

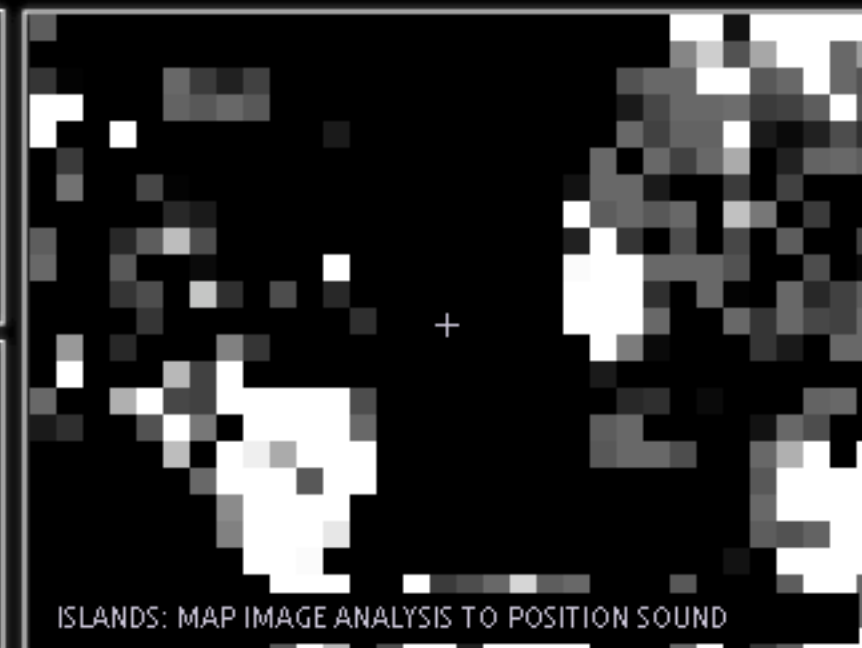


DEPTH
METERS

14.93



CURRENT POSITION ON MAP



ISLANDS: MAP IMAGE ANALYSIS TO POSITION SOUND

BY TUOMO TAMMENPÄÄ AND TAMAS SZAKAL, 2004

www.needweb.org | www.tone.hu